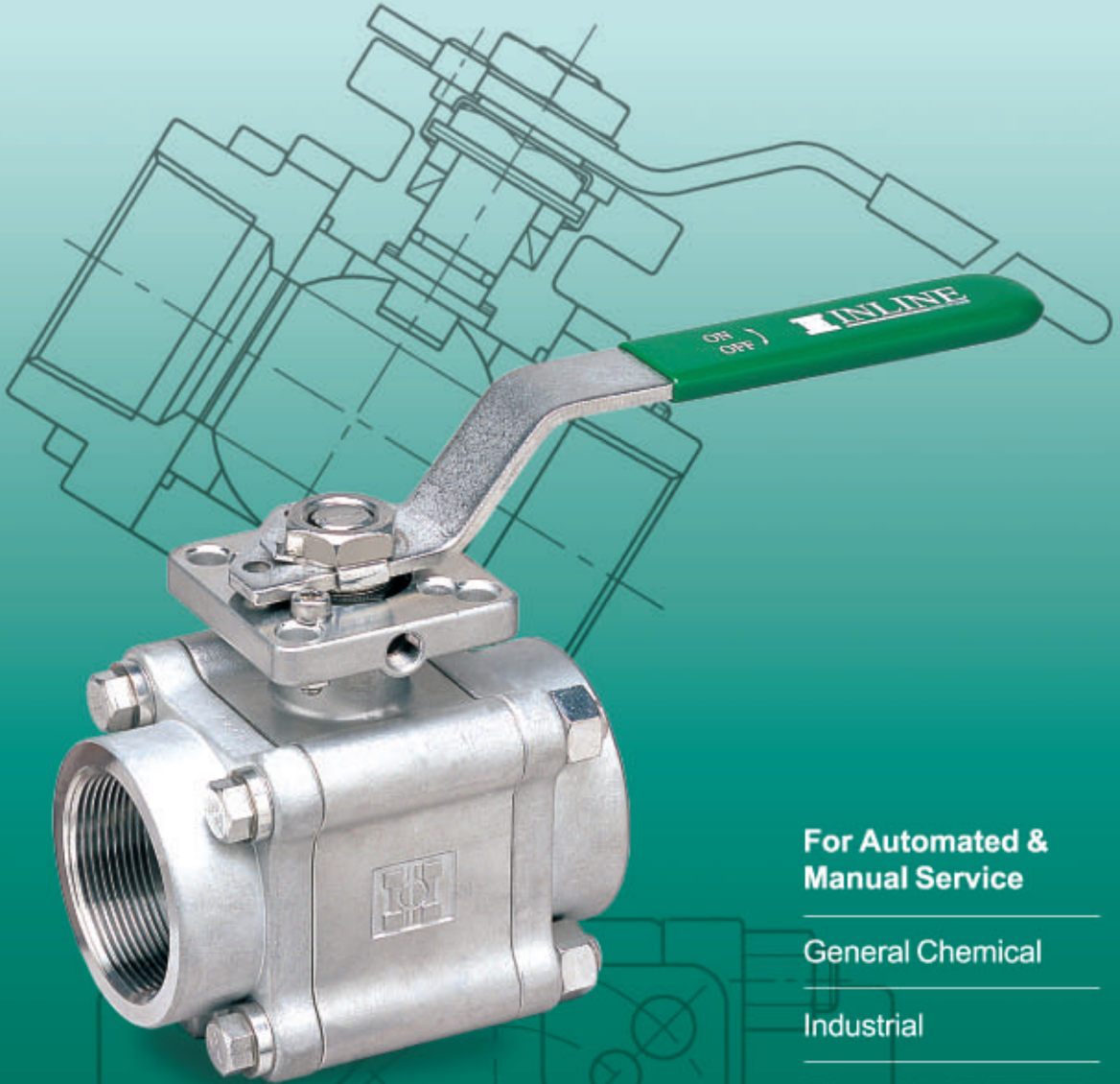


# 334/336 Ball Valve

**3-Piece Full and Standard Port  
ISO 5211 Direct Mount Pad**



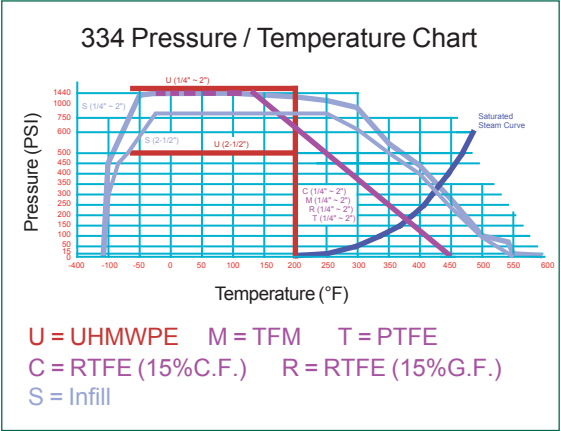
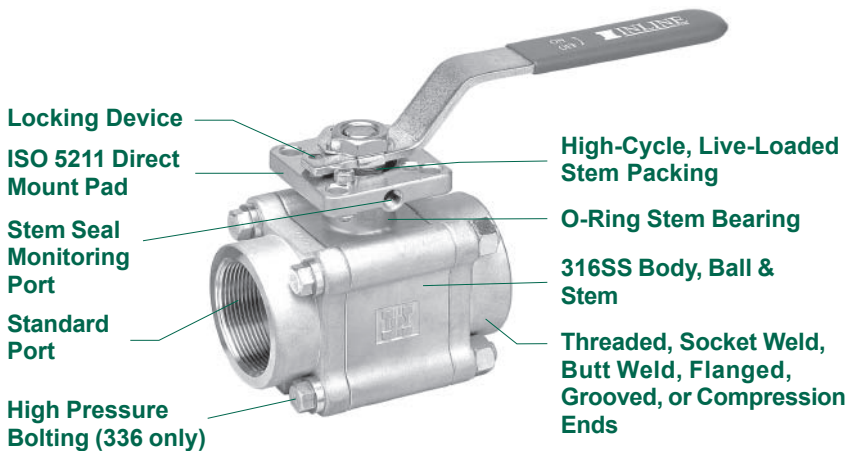
**For Automated &  
Manual Service**

General Chemical

Industrial

Other Corrosion  
Resistant Applications

# The 334/336 Series Ball Valve

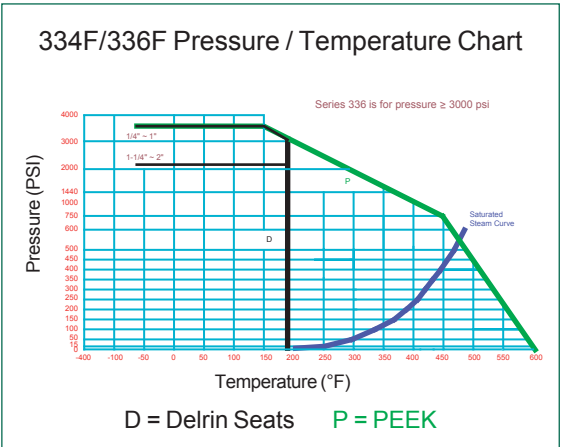


## Standard Features and Benefits

- **Dual Pattern ISO 5211 Direct Mount Pad**  
 No bracket or drive coupling needed for automation  
 Dual pattern pad fits a wide range of actuator sizes  
 Eliminates exposed moving parts for safer work environment  
 Prevents side-loading and improves actuator positioning
- **High-Cycle, Live-Loaded Stem Packing**  
 Spring energized stem seals self-adjust to compensate for wear, pressure/temperature changes ensuring a leak-tight seal and extending service life
- **O-Ring Stem Bearing**  
 Maintains stem alignment  
 Reduces packing side-loading and wear  
 Enhances stem seal performance
- **Blow-Out-Proof Stem**  
 Stem is bottom loaded to prevent removal when valve is in service
- **3-Piece Swing-In-Place Construction**  
 Swing-out construction makes the valve easy to repair in line
- **Universal Valve Body**  
 Same center section can be used for both manual and automated service
- **Lockout Capability**  
 Enables plant personnel to secure valve in open or closed position when manually operated
- **Heavy Duty Construction**
- **Investment Cast**  
 High quality investment castings improve dimensional control and reduce porosity; certified material test reports are available upon request
- **Anti-Static Stem**
- **Standard Seats and Seals Suitable for 150 PSI Saturated Steam**

## Options

- End connections available in NPT, socket weld, butt weld, flanged or grooved, in 316SS or carbon steel
- High pressure seats and seals
- High temperature seats and seals capable of up to 400 psi of saturated steam



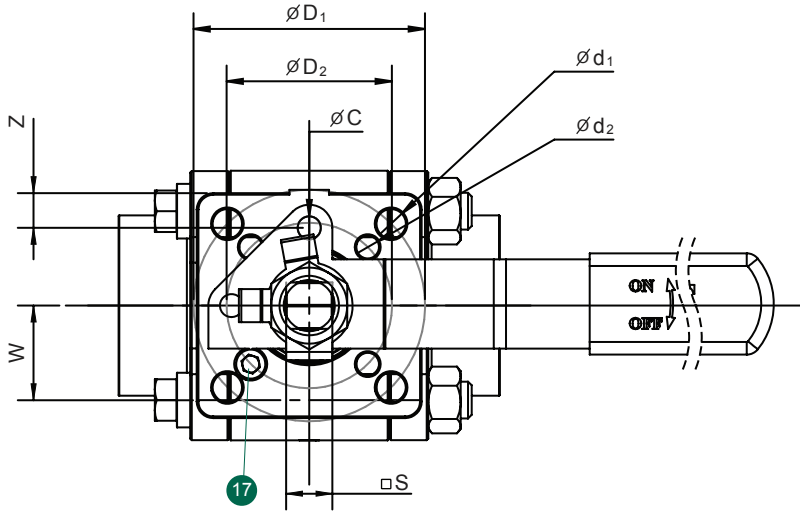
## Operating Conditions

- Temperature range:  
 -20°F ~ 600°F (depending on seats)
- Maximum pressure:  
 334F/336F : 3600 PSI (Class 1500)  
 (1/4" ~ 1")  
 334F : 2160 PSI (Class 900)  
 (1-1/4" ~ 2")

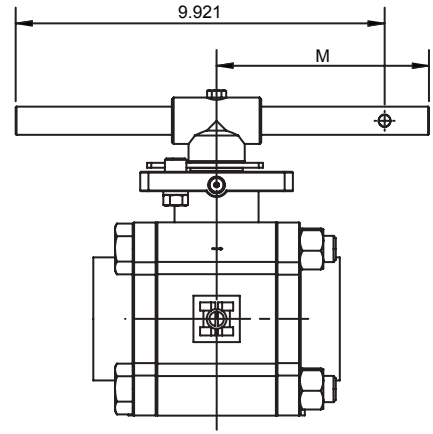
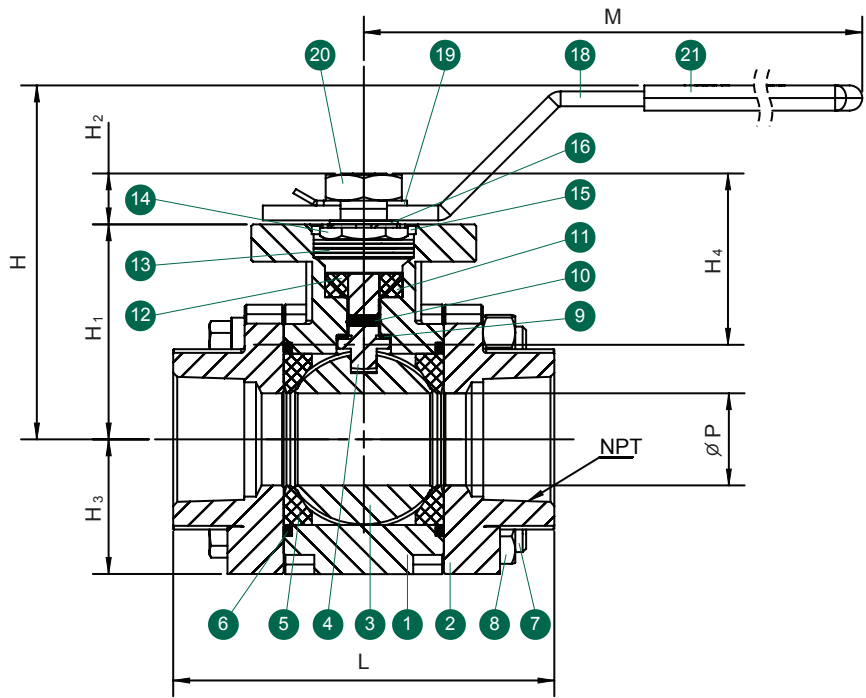
*Note: Series 336 is for pressures ≥ 3000 psi.  
 It uses a 334 body with 410SS body bolts*

## Specifications

- All valves designed and pressure tested to ANSI/ASME B16.34, MSS-SP-110 and API 598
- All materials comply with applicable ASTM material specifications
- End connections: All to B16.34;  
 NPT to B1.20.1; socket weld to B16.11; butt weld to B16.25;  
 flanged to B16.5



Valve Components			
#	Part Name	Material	Qty.
1	Body	A351 Gr. CF8M	1
2	End Cap	A351 Gr. CF8M	2
3	Ball	316SS	1
4	Stem <sup>1</sup>	316SS 17-4	1
5	Seat	RTFE (15% C.F.)	2
6	Body Seal	PTFE	2
7	Body Bolt <sup>2</sup>	304SS (334) 410SS (336)	4
8	Body Nut	304SS	4
9	Thrust Washer	PEEK	2
10	Stem O-Ring	Viton 90	1
11	Stem Packing Set	PTFE	1
12	Packing Gland	304SS	1
13	Belleville Washer	301SS	4
14	Gland Nut	304SS	1
15	Gland Nut Lock Washer	304SS	1
16	Stem Spacer	304SS	2
17	Positioning Pin	304SS	1
18	Handle	304SS	1
19	Handle Nut Lock Washer	304SS	1
20	Handle Nut	304SS	1
21	Handle Cover	Vinyl	1



334F 2" & 334S 2-1/2"

Size		Dimensions (Inches)																	ISO 5211 Pattern	Wt. (lbs)
334F/336F	334S/336S	L	M	P	H	H <sub>1</sub>	H <sub>2</sub>	H <sub>3</sub>	H <sub>4</sub>	D <sub>1</sub>	D <sub>2</sub>	d <sub>1</sub>	d <sub>2</sub>	C	S	W	Z			
1/4	—	2.58	5.41	0.45	3.02	1.80	0.38	0.87	1.56	1.97	1.42	0.27	0.22	0.28	0.35	0.62	0.28	F03 / F05*	1.70	
3/8	1/2	2.58	5.41	0.45	3.02	1.80	0.38	0.87	1.56	1.97	1.42	0.27	0.22	0.28	0.35	0.62	0.28	F03 / F05*	1.71	
1/2	3/4	2.80	5.41	0.57	3.11	1.89	0.38	1.00	1.52	1.97	1.42	0.27	0.22	0.28	0.35	0.75	0.28	F03 / F05*	2.20	
3/4	1	3.69	6.37	0.82	3.22	1.99	0.43	1.21	1.53	1.97	1.65	0.27	0.22	0.28	0.43	0.89	0.28	F03 / F05*	3.65	
1	1 1/4	4.19	6.37	1.00	3.41	2.19	0.41	1.35	1.61	1.97	1.65	0.27	0.22	0.28	0.43	0.99	0.16	F03 / F05*	5.19	
1 1/4	1 1/2	4.54	8.02	1.25	4.21	2.56	0.61	1.60	2.04	2.76	1.97	0.35	0.27	0.28	0.55	1.12	0.41	F05 / F07*	8.49	
1 1/2	2	4.98	8.02	1.50	4.48	2.84	0.61	1.83	2.09	2.76	1.97	0.35	0.27	0.28	0.55	1.35	0.41	F05 / F07*	11.02	
2	2 1/2	5.87	5.51	2.00	5.44	3.50	0.77	2.30	2.61	4.02	2.76	0.44	0.35	0.35	0.67	1.67	0.44	F07 / F10*	22.81	

\* Direct mount with stem adapter bushing



Automation Systems



Direct Mount Products

## 334 / 336 Ordering Information

Example: 2" 3-Piece Standard Port Direct Mount Ball Valve, ISO 5211 Direct Mount Pad with Lever Handle and Locking Device, 316SS Body and Trim, RTFE (15% C.F.) Seats, PTFE Seals, NPT Ends

Valve Series	Valve Size	Body Material	End Material	Ball Material	Stem Material	Seat	Seal	End Connection <sup>1</sup>	Port	Ball Config.
<b>334S</b> - Standard Port	2 <sup>†</sup> 1/4" 3 <sup>†</sup> 3/8" 5 1/2"	6 - A351 Gr. CF8M (316)	6 - A351 Gr. CF8M (316)	6 - A351 Gr. CF8M (316)	6 - A351 Gr. CF8M (316)	C - RTFE (15% C.F.) D - Delrin (PTFE Filled Acetal Homopolymer) P - PEEK (PTFE and Carbon Filled PEEK) S - Infill (Carbon, Carbon Fiber Filled Modified PTFE) R - RTFE (15% G.F.) T - PTFE U - UHMWPE	T - PTFE B - Buna N G - Graphite U - UHMWPE (Food Grade) Q - S Gasket TFE	T - NPT S - Socket Weld 1 - Butt Weld Sch. 10 4 - Butt Weld Sch. 40 8 - Butt Weld Sch. 80 G - Grooved A - ANSI 150# Flanged B - ANSI 300# Flanged Q - ANSI 600# Flanged P - Compression X - Other	2 - 2 Way	S - Straight Port
<b>334F</b> - Full Port	7 3/4" A 1"	2 - A216 Gr. WCB	3 - A351 Gr. CF3M (316L)	7 - 17-4						
<b>336S</b> <sup>§</sup> - Standard Port, High Pressure Bolting	B 1 1/4" C 1 1/2" D 2" E* 2 1/2"		2 - A216 Gr. WCB							
<b>336F</b> <sup>§</sup> - Full Port, High Pressure Bolting										
<b>334C / 336C</b> - Compression Ends										

<sup>†</sup> Full Port Only

\* Standard Port Only

<sup>§</sup> 17-4 Stem Only

<sup>1</sup> Butt Weld ends are A351 Gr. CF3M (316L)

Due to continuous product development, information may change without notice.



Distributed by:

### INLINE INDUSTRIES, INC.

4701-A Littlejohn Street  
Baldwin Park, CA 91706  
Tel: (800) 568-8998  
(626) 813-6188  
Fax: (626) 813-6186  
www.ballvalve.com  
info@ballvalve.com